



GAT MONTHLY MEMBERSHIP PROGRESS REPORT

Results as of: 5/31/2023

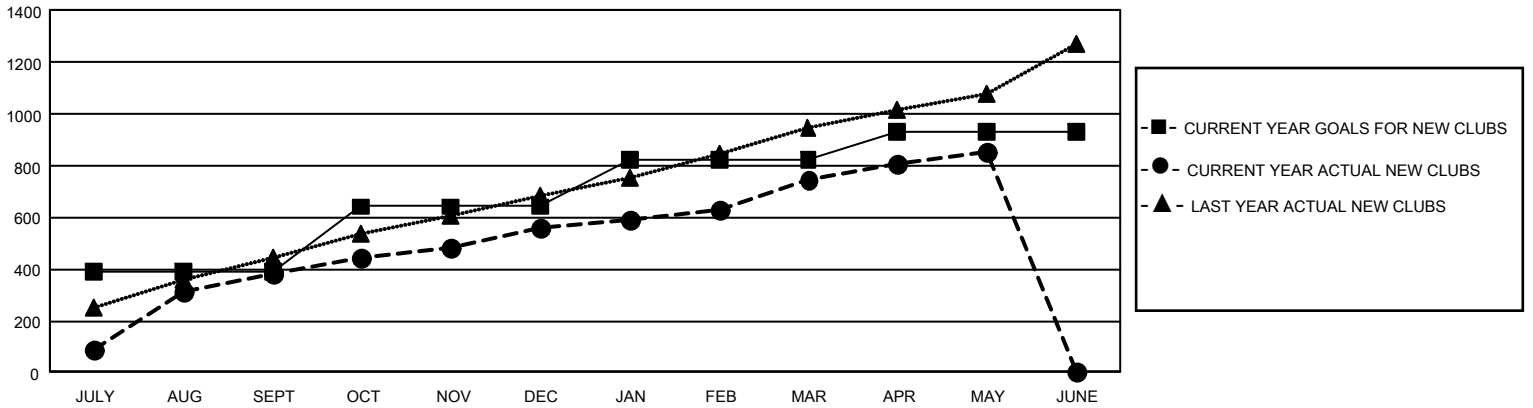
GAT Constitutional Area 6

REPORT DOES NOT INCLUDE CLUBS IN UNDISTRICTED AREAS.

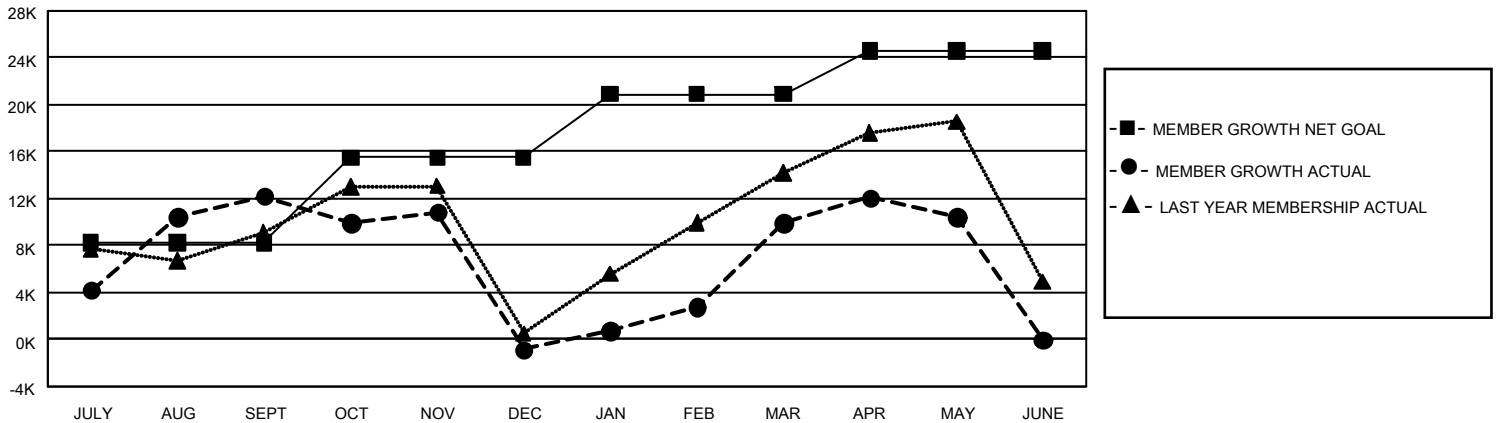
Clubs			
RESULTS FOR 2022-2023			
QUARTER	NEW CLUB GOAL	NEW CLUBS	DROPPED CLUBS
JULY/AUG/SEPT	1,179	385	305
OCT/NOV/DEC	744	176	747
JAN/FEB/MAR	546	186	169
APR/MAY/JUNE	330	109	30

Members			
RESULTS FOR 2022-2023			
QUARTER	MEMBER GROWTH NET GOAL	MEMBER GROWTH ACTUAL	DROPPED MEMBERS ACTUAL (including transfers)
JULY/AUG/SEPT	8237	24,718	10,092
OCT/NOV/DEC	7241	15,336	27,274
JAN/FEB/MAR	5413	19,623	6,185
APR/MAY/JUNE	3731	10,798	8,884

GOALS AND ACTUAL NEW CLUBS CUMULATIVE



GOALS AND ACTUAL MEMBERS CUMULATIVE



DROPPED CLUBS: 1,250	
DROPPED MEMBERS	
DECEASED	1,000
CLUB CANCELLED	16,775
OTHER	34,666
TOTAL	52,441

8,023 CLUBS OF 13,493 ADDED 1 OR MORE NEW MEMBERS

[CLICK HERE FOR CUMULATIVE MEMBERSHIP DATA](#)

GENDER DISTRIBUTION	
MALE	281,402 (71.76%)
FEMALE	110,623 (28.21%)
NON BINARY	6 (0.00%)
PREFER NOT TO ANSWER	95 (0.02%)
TOTAL FAMILY UNIT MEMBERS 210,211	
FAMILY MEMBERS PAYING HALF DUES 132,948	